

★ RURAL EB-5 | PRIORITY PROCESSING ★



MOO DAIRY FARMS

EB-5 Rural Investment Opportunity

Friona, Texas | 600+ Acres | Fully Operational

Secure your family's future with a direct path to a U.S. Green Card and citizenship

\$800,000
Min. Investment

5,500+
Jersey Cows

~600
Acres of Land

14,500
Target Cattle

\$200M+
Target Value



IMPORTANT DISCLOSURE & CONFIDENTIALITY NOTICE



This presentation is for informational purposes only and does not constitute an offer to sell or a solicitation to buy securities in Friona Dairy EB5 Investors Fund LP (the "Company"). Any such offer will be made exclusively through the Company's official Private Placement Memorandum (PPM).

The information provided herein is confidential and intended solely for the recipient's review of the Company's business model and investment strategies. It should not be considered legal, financial, or tax advice. While all EB-5 investments must remain "at risk" per USCIS requirements, this project is supported by tangible operational assets. All financial projections are based on current market assumptions and are subject to change.

No part of this material may be reproduced without express written consent.



INVESTMENT OVERVIEW

1



Fully Operational

5,500+ Jersey cows milking today — real business, not a promise.

2



Asset-Backed

600+ acres, milking facilities, herds and equipment provide tangible collateral.

3



Essential Industry

Dairy/Agriculture is government-supported with continues market demand.

4



Rural TEA Priority

Friona, TX qualifies as Rural TEA — 20% reserved visas, priority USCIS processing.

5



Clear Growth Path

Scaling 5,500 to 14,500+ cattle is a structured plan with measurable milestones.

6



100%+ Job Buffer

100%+ surplus job creation above EB-5 requirements — robust safety margin for investors.



WHY US?

600

Real Estate

Dairy farm built on ~600 acres of land

5,500
+

In Operations

Cattle already producing — jobs created and operations running without relying on EB-5 capital.

800+

Seeking Only 35 Investors

Creating 800+ EB-5 eligible jobs while seeking only 35 investors — over 22 jobs per investor.

\$38M
+

Already Invested

Your EB-5 capital is backed by strong, tangible real assets

20%

Reserved Visas — Rural TEA

Friena, TX qualifies as a Rural TEA with priority USCIS processing and faster adjudication.

365

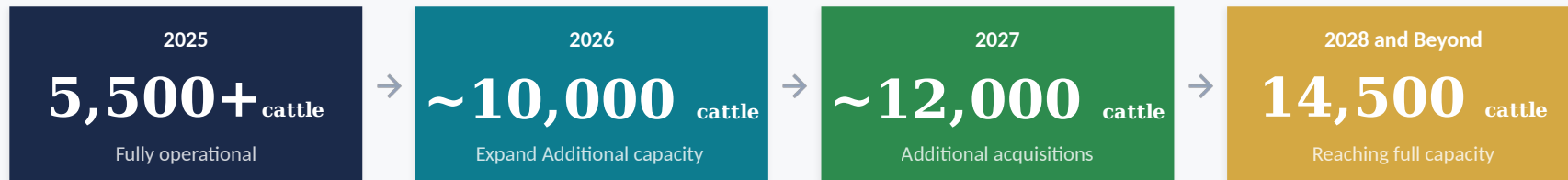
Days of Essential Demand

Dairy is a staple of everyday life — a recession-resistant, government-supported essential industry.



USE OF FUNDS

EB-5 capital will fund the next expansion phase — purchasing additional Jersey cattle, expanding cows holding areas, feeding infrastructure, heifer facility, Natural gas production and scaling operational capacity.



1

Cattle Acquisition

Purchase additional Jersey cattle to scale herd from 5,500 to 14,500+

2

Expand Facilities

Expand cow holding areas, commodity barn, heifer facility

3

Operational Efficiency

Day-to-day operations: farm own silage, veterinary care, staffing, logistics

4

Build Digester System

Produce natural gas from cow manure for sustainable energy



JOB CREATION

Job creation is the cornerstone of EB-5 eligibility. Moo Dairy Farms creates and maintains qualifying jobs well above the minimum — providing



Direct Employment

Milking parlor operators, feed lot workers, nutritionists, veterinarians, and farm admin staff



Supply Chain Jobs

Feed, grain and silage suppliers, milk transportation, veterinary vendors, equipment technicians



Construction Jobs

Parlor and facility construction, engineering, electrical, plumbing, HVAC, equipment installation



10 Jobs Per Investor

EB-5 minimum of 10 full-time qualifying jobs per investor — fully met through Regional Center model



60%+ Job Buffer

60%+ surplus job creation above the EB-5 minimum — ensuring a robust safety margin for all investors



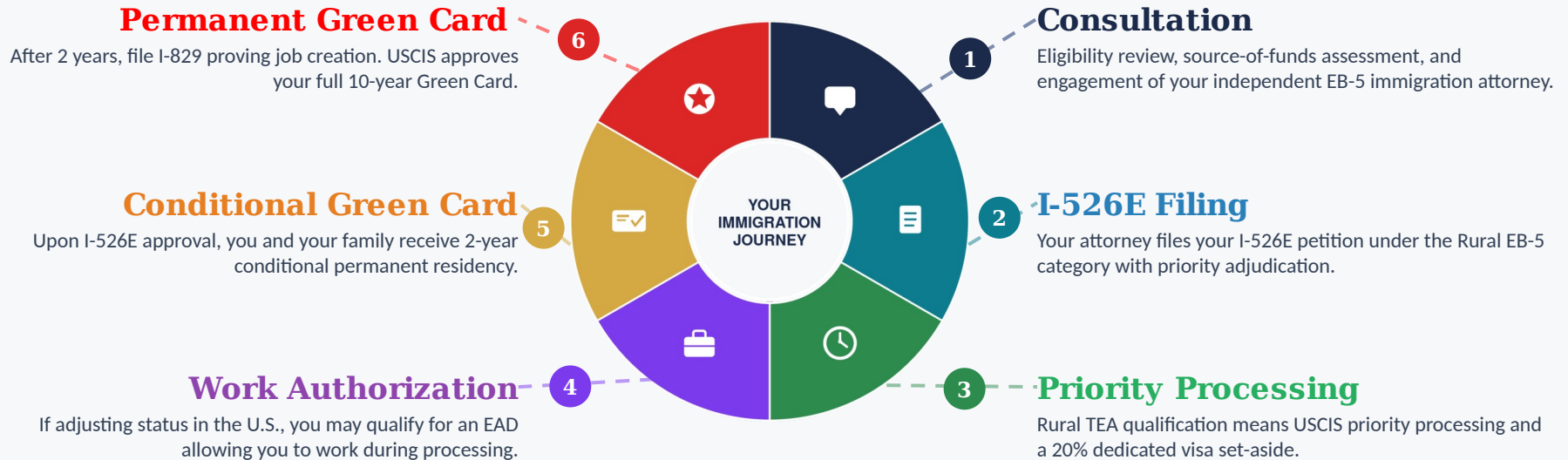
Validated Projections

Third-party economist report validates all direct, indirect, and induced job creation projections



THE IMMIGRATION JOURNEY - To American Dream

Our primary goal is the security of your U.S. Permanent Residency. Here is how your immigration journey from first consultation to Green Card.



★ **RURAL TEA ADVANTAGE:** Investors benefit from a dedicated 20% visa set-aside and USCIS priority processing — significantly reducing wait times compared to standard EB-5 projects.



TEAM

Key partners and professionals driving the Moo Dairy Farms EB-5 investment project.



EB-5 Legal Counsel

Shae Armstrong specializes in EB-5 project finance with \$5B+ in EB-5 involved financings — covering cross-border transactions, real estate investment, and private equity.



Regional Center

State Wide EB5 Regional Center LLC is a USCIS-approved regional center sponsoring EB-5 capital investment projects, enabling foreign investors to obtain visas through qualifying investments.



Fund Administrator

PRXY Fund Services LLC ensures transparency and investor accountability as required by the 2022 EB-5 Reform and Integrity Act — creating a safer experience for all stakeholders.



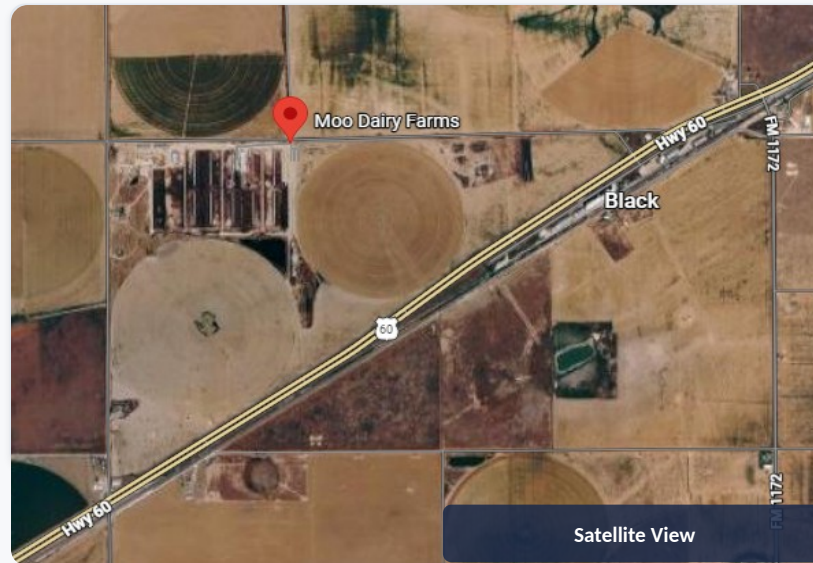
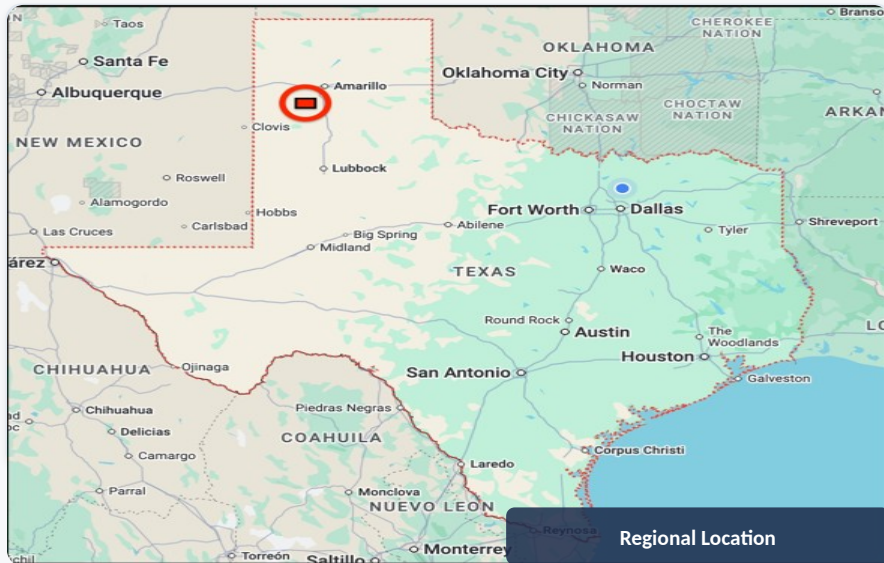
EB-5 Economist

Impact DataSource brings 20+ years in regional economic analysis, with hundreds of TEA certifications and EB-5 economic impact reports completed since 2010.



VISIT US

Located in the heart of the Texas Panhandle — one of the most productive dairy regions in the United States.



Farm Address

2686 County Road 23, Friona, TX 79035 — [View on Google Maps](#)

Dairy Office

2356 County Road E, Friona, TX 79035 — [View on Google Maps](#)



FARM GALLERY





FAQ

Is my family included in the petition?

Yes. Your spouse and eligible unmarried children under 21 are included at no additional investment cost.

What is the primary goal of this investment?

Green Card approval and capital preservation — an immigration-first investment designed to meet EB-5 requirements.

What happens to my funds after I invest?

Capital flows through escrow to the NCE, which lends to the JCE. Funds are used for expansion and cattle acquisition.

Is this a safe investment?

All EB-5 investments involve risk by law. Moo Dairy Farms' asset-backed, fully operational status provides a more tangible foundation.

Why does Rural TEA matter?

Rural TEA gives investors a 20% visa set-aside and USCIS priority processing, eliminating multi-year backlog delays.

What is the minimum investment amount?

The minimum is \$800,000 per the EB-5 Reform & Integrity Act Rural TEA requirement. Additional professional costs apply.

Can I work in the U.S. while pending?

If you file I-485 concurrently with I-526E, you may apply for an EAD allowing you to work during processing.

What is the job creation buffer?

The project creates more than 60% surplus jobs above the EB-5 minimum — ensuring investors meet the 10-job threshold.

REALIZE YOUR VISION — CONTACT US



✉ eb5@moodairyfarms.com

☎ +1 (279) 666-3276

🌐 www.MooDairyFarms.Com

📍 2686 County Road 23, Friona, TX-79035

Next Steps

1

Consultation

Contact us for a confidential consultation and eligibility review.

2

Due Diligence

Review the PPM, business plan and talk to respective subject matter experts

3

Source of Funds

Begin gathering source-of-funds documentation.

4

Subscribe

Complete subscription agreement and wire the funds.

5

I-526E Filing

Attorney files petition with USCIS priority processing.